



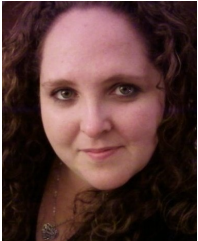
REGION 7

# CONNECTION

Volume 1, Issue 1

July 2011

Connecting local units and councils in Snohomish and Island Counties



## REGION 7 DIRECTOR VIRGINIA MUNIZ

[ptareg7@wastatepta.org](mailto:ptareg7@wastatepta.org) 360-403-9731

Well, summer is upon us! And although it's one of the coldest summers I've ever experienced, it really is a treat to play with the kids and stay in our PJ's until lunch if we want! It has been an honor to be elected as your Region Director for the next 2 years. If the past 2 months are any indication as to how quickly a 2 year term can go, my service to this Region will be over in a blink of an eye!

I thought I would start off by sharing a little more about me. Again, my name is Virginia Muniz. I have been married for 16 years to a very supportive husband. I have 3 beautiful children, whom I refer to as my babies. My son is entering 7<sup>th</sup> grade, my daughter is in 5<sup>th</sup> grade and my youngest is moving up to 2<sup>nd</sup> grade. I believe this is referred to as being in the "thick of it"! I grew up as a city girl, from Denver Colorado, but I currently live in the farmlands of Arlington. It's a great community, and my kids have hundreds of trees to choose from when tree climbing or building forts. I have been involved in PTA for 6 years. My years as a PTA officer have made a lifetime impression on both me and my family.

Well, that's enough about me.....now let's talk about Region 7!

I am excited to let you know that Fall Conference is quickly upon us. Training will be held at Eisenhower Middle School in Everett. This is a great time to bring the new board and receive valuable training for the upcoming school year. If at all possible I suggest carpooling, as this is a great time to start team building. I am also excited to let you know that PTA & The Law will be offered TWICE for Region 7, in the month of October. The Dates are Tuesday October 4<sup>th</sup> from 5-9PM and Saturday October 22<sup>nd</sup> from 9-Noon. The location has not been set yet, but will be by the next newsletter!

*continued on page 2*

**Theresa Ramey**  
Region Membership Chair  
[RMC7@wastatepta.org](mailto:RMC7@wastatepta.org)  
425-232-3107

**Jesica Stuckles**  
Region Legislative Chair  
[RLC7@wastatepta.org](mailto:RLC7@wastatepta.org)  
425-931-8553

**Michelle Nims**  
Region Programs Chair  
[michellenims@juno.com](mailto:michellenims@juno.com)  
425-338-7202

**Jenny Forbes**  
Communications  
[Jennyathome19@msn.com](mailto:Jennyathome19@msn.com)  
425-385-3939

**Pam Osburn**  
Everett Council Rep.  
[pam@duracoat.org](mailto:pam@duracoat.org)  
360-652-2360

**Shelley Friend**  
Mukilteo Council Rep.  
[shelleyfriend@ymail.com](mailto:shelleyfriend@ymail.com)  
425-743-9012

**Jamie Groshong**  
Mukilteo Council Rep.  
[Groshong@comcast.net](mailto:Groshong@comcast.net)  
425-741-9959

**Bev Young Reed**  
Edmonds Council Rep.  
[bevbug@yahoo.com](mailto:bevbug@yahoo.com)  
360-292-5961

**Katie East**  
Service Specialist  
[KatieEast@gmail.com](mailto:KatieEast@gmail.com)  
360-386-8390

### INSIDE THIS ISSUE

New WSPTA Bylaw	2	Membership Minute	4
Legislative Loop	3	Programs Piece	5
Each Voice Matters	3	Council Communications	6, 7
A Bit About Budgets	4	Region 7 Conference	8



everychild.onevoice.®

## IMPORTANT INFORMATION YOU NEED TO KNOW



During the 2011 Washington State PTA Convention, a new bylaw was approved by delegates requiring that all executive committee members of a local unit or council receive yearly state-PTA-approved training in order to remain in good standing.

Why the emphasis on training? Well, think about other volunteer organizations, such as the Boy or Girl Scouts. Do you think someone can start a Boy Scout troop without having been trained first? No way! Then, think about small businesses – what happens if someone opens a business without having a business plan, the finances to support the operation, and a board of directors to oversee everything? A long-term, successful business probably won't happen.

When we remember – or learn – that PTAs are usually non-profit, tax-exempt, charitable corporations - small businesses run by volunteers – then it's clear why training is crucial. All PTA leaders should know about the applicable state and federal regulations; all PTA leaders must understand basic fiduciary responsibilities; all PTA leaders need to know how to work together as a board in order to realize the PTA's vision of "Making every child's potential a reality."

The Region trainings and *PTA & the Law* generally last 3-5 hours: the equivalent of one working day. The fee of \$40-50 per training pays for as many PTA board members to attend as the local unit or council wants to send. As a PTA leader, you can't afford to miss these opportunities. After all, PTA is a lot more than just popcorn and carnivals.

## REGION DIRECTOR MESSAGE CONTINUED

*Continued from front page*

Another great way to find out Region 7 News is to "Like" us on FACEBOOK. Many important updates and information will be posted on Facebook starting this year. So here's the link... <https://www.facebook.com/home.php#!/pages/Washington-State-PTA-Region-7/101021289991999>

In closing I would like to introduce the Region 7 Service Delivery Team for 2011-2012. The Service Delivery Team is an important resource to the Region! The leadership, creativity, knowledge and passion this team has is just a phone call or email away for YOU as a WSPTA member and leader to take advantage of! They are the faces you see at trainings, providing the valuable "behind the scenes" work!

Our Region Membership Chair (RMC) is Theresa Ramey, Jessica Stickles- Legislative Chair (RLC), Michelle Nims- Programs Chair (RPC), Jenny Forbes-Communications & Everett Council Rep., Pam Osborn-Everett Council Rep., Shelley Friend-Mukilteo Council Rep., Jamie Groshong-Mukilteo Council Rep., Bev Young Reed-Edmonds Council Rep., Katie East-Service Specialist.

Currently we are looking for our Region OUTREACH chair. This is the position I held last year. And I can tell you it is a rewarding experience to work with the other Outreach chairs in Washington State to be sure that we are focusing our efforts on reaching out and including those who are not typically at the PTA table. If you are at all interested in knowing more about this position or would like to apply for this position, please contact me directly at [ptareg7@wastatepta.org](mailto:ptareg7@wastatepta.org)

I look forward to this upcoming year! Please feel free to contact me or my team with any questions or concerns.....And ENJOY the rest of the Summer!!



**Virginia Muniz**  
**Region 7 Director**



## LEGISLATIVE LOOP

## EACH VOICE MATTERS....



### Am I a Child Advocate??

**Yes, you are! Do you know how I know? Because you are a member of PTA!**

**You don't have to go to Olympia to take care of your child or other children around you. You just have to speak up when one of them is in need.**

**My name is Jesica Stickles and I will be your Region 7 Legislative Chair for the year. My passion is to help others find a voice in their school, community or in their state. To speak out for children that don't know how to have a voice yet. Or maybe that just aren't listened to!**

**Throughout the school year you will hear from me regarding how you can get involved:**

**1. PTA events: Legislative Assembly (We vote on the issues that matter most to us) and Focus Day (We go in a huge pack of PTA parents to Olympia)**

**2. Legislative Session: This next session will run for 60 days (Jan-March 2012) and we will need help contacting our legislators about our "chosen" issues.**

**I'm here as a resource to contact your local or state legislators. Please know the door is always open and you can call or email anytime!**

**Jesica Stickles, RLC**  
**425-931-8553**  
**RLC7@wastatepta.org**



## WHEN SPEAKING ON BEHALF OF OUR CHILDREN

Summer, early fall is an exciting time for PTA. We are all busy putting our boards together, finding committee chairs for our Walkathons, Auctions, Safety Improvement committees, figuring out our goals for the coming year. We do really good, important work in our local schools. We have become a necessary and integral part of our local school environment. But we have another role, equally important, and that is to speak up in defense of children. Sometimes we are so busy helping our own kids in our own schools it's easy to forget our advocacy role. This is why your legislation chair is so important. This chair connects the voices in your local unit, with other voices from across the state in defense and support of children.

There is tremendous power in numbers. Each and every voice matters. The PTA has a unique role to play as advocates. There is no other organization in this state that speaks solely for children.

### So what can you do?

- Help find a legislation chair for your local unit. All they need is good communication skills and an interest in advocacy. We will train and provide all of the resources the chair will need.
- Give your legislation chair 5-10 minutes at the beginning of every PTA meeting. This is difficult, there is lots to talk about, there are fundraisers, and committees, and board work, but we have to be diligent. To truly implement Every Child One Voice, it has to be a priority. Prioritize 5-10 minutes for your legislation chair.
- Sign up for action alerts and ask every member who attends PTA meetings to sign up for action alerts (sign up at [www.wastatepta.org/legislation](http://www.wastatepta.org/legislation)). Use your email lists to encourage people to sign up for action alerts.
- Place legislative articles in your PTA newsletters – these are provided by the state and region and simply need to be placed into the newsletters.

Just taking the above simple steps help you and your local unit to represent **Every Child with One Voice.**

## A BIT ABOUT BUDGETS



At your first general meeting of the year, your membership should approve your Standing Rules and your Budget. The Standing Rules define who you are. They tell who can vote, how certain committees are managed, what restrictions there are on money, etc. The Budget defines what you will do for the year.

Does your unit have the Treasurer write a budget, give it a cursory once-over, and then effectively put it in the drawer? I ask you to reconsider. This is a recipe for endless discussions at Board Meetings about how the directories were supposed to be paid for, how many members were assumed, what the dues amount is, how much is available for each classroom, etc.

Before the school year starts, the Executive Committee should go through the budget line by line. Every officer should understand what each line is for, where the funds are coming from, and who will be in charge of it. I guarantee if you do this, your committee will have an in-depth discussion about what your goals are for the year. **This is a good thing.**

Then, at your first General Membership meeting, you will be able to stand with confidence and recommend the approval of your unit's plan for the year. Yes, I recommend you approve the budget, even if you voted on a preliminary budget in the spring. The current members have the right to vote for themselves what will happen in the year. The vote at the end of the year was what the outgoing gang wanted to do. Things change, people come and go. Your budget needs to reflect who you are now. Which means you need to plan for the unexpected.

Every budget should have a contingency line. It might be the funds that were raised last year, but not spent or earmarked. These dollars should be there, for the membership to allocate if they have a need. Then, write in bold letters at the top of the budget: "With Approval by the Board to Reallocate." This gives the Board of Directors the authority to move dollars from one category to another, as needed, without a vote of the general membership. Try this. Your meetings will go more smoothly, with fewer disagreements and disgruntled members. Heck, you might even develop a fondness for those monthly financial reports.

## MEMBERSHIP MINUTE

As we all know, membership is every body's business! You are all charged with the task of both maintaining and increasing membership in your local PTA - the lifeblood of any local unit. The primary reason for developing membership is to build an informed team of individuals to work on behalf of all children and youth. An involved PTA is a valuable resource for starting and maintaining programs and projects to benefit children and the community. Extending PTA membership also helps to increase public awareness of the valuable resource the PTA is to parents, educators, and those in the community who work to secure a nurturing, healthy environment for children and to build strength in our numbers so that policy makers in all areas, at all levels will hear a strong, unified voice on behalf of children. When collecting dues for membership it is imperative to be aware that "all dues collected by the local unit for council, state and national PTA must be set aside and not used for any other expense." Please feel free to email me at any time I am here to help. Look for some great membership information at the Membership classes at the Region 7 Summer Conference. Please make sure to update your board's information on the WSPTA website. I will use this information to contact all the Membership Chairs. I look forward to working with you all again this year!

*Theresa Ramey, RMC*

425-232-3107

[Rmc7@wastatepta.org](mailto:Rmc7@wastatepta.org)



### **NEW DUES IN 2011-2012!**

**National cost per member: \$2.25**

**WSPTA cost per member: \$5.75**

**Plus \$5.00 yearly fee to WSPTA**

- **If you are NOT in a Council, send your \$8.00 per member to WSPTA**
- **If you are in a Council, add Council dues and send to your Council.**

## PROGRAMS PIECE

Summer weather is finally here! Take the time to enjoy your children and some well deserved "down time" before ramping back up for the school year. It won't be long before we all hit the ground running again!

As you consider your PTA's goals for the next year, please consider applying for the WSPTA awards. Whether this will be the first time your PTA has applied or it is something you do every year...it is an incredible learning experience! Take the time to celebrate the wonderful things your PTA does. Share your successes with your membership. See where your PTA excels and where you have room for improvement (there's always room for improvement, right?).

This year we have added a new position to your Region 7 Service Delivery Team....the Region Programs Chair. I am here to help get the word out about these awards and answer any questions you may have about any of the following:

- Applegate Grant
- Communications Awards
- Honor Unit
- Outstanding Local Unit Award
- Outstanding Newsletter Award
- Reflections
- Standards of Excellence



Go to the WSPTA website and login to the leadership section to find out more about these awards. Feel free to look at the Honor Unit and Standards of Excellence applications as they can be a great guideline to see if your PTA is doing everything it needs to be.

The 2011-2012 applications and judging forms will be available online shortly.

If you have any questions, please feel free to contact me!

*Michelle Nims,*  
*Region 7 Programs Chair*  
 425-338-7202  
[michellenims@juno.com](mailto:michellenims@juno.com)

### Local Units NOT in a Council—

Come and meet your Service Delivery Team Reps at the Region 7 Conference! We're here to help you get important information, answer questions, and yes, even help you address problems big and small. See you there!

### 2011-2012 REFLECTIONS THEME



### "DIVERSITY MEANS..."

PTA believes all children deserve a quality arts education and encourages students to pursue artistic expression through participation in its annual arts Reflections Program. The program offers students the opportunity to create works of art for fun and recognition. Students in pre-school through grade 12 are encouraged to create and submit works of art in six areas: dance choreography, film production, literature, musical composition, photography, and the visual arts (which includes art forms such as drawing, painting, print making, and collage). For more than 40 years, the program has encouraged millions of students across the nation and in American schools overseas to create works of art. The Reflections Program was started in 1969 by then Colorado PTA President Mary Lou Anderson.

Students participate in the Reflections Program by submitting entries to their local PTA or PTSA. Any PTA/PTSA in good standing is eligible to sponsor a Reflections Program.

**Take our  
 Region 7 Conference Class  
 to learn more about the  
 Reflections Program !**

# COUNCIL COMMUNICATIONS

## EDMONDS COUNCIL 7.2

**We currently have openings at the Council level for:**

- **Vice President**
- **Secretary**
- **Reflections Chair**



**Join us for our next meeting Monday, September 19, 2011, 7:00pm, ESC Rooms 101-102.**

***Bev Young Reed***  
***Edmonds Council Rep.***  
**bevbug@yahoo.com**

## EVERETT COUNCIL 7.3

**Got Questions??**

**We Got Answers!! - Everett PTSA Council**

Jenny Forbes & Pam Osburn—Co-Presidents

Angela Steck—Vice President

Toni Wilson—Treasurer

Lisa Coughlan—Secretary

Christa Pederson—Membership Chair

Kristine Petereit—Banquet Chair

Vicki Fraser—Shoe Fund Chair

**Advocacy Chair—OPEN**

**Reflections: Judge Coordinator—OPEN**

**Reflections: Area 1 Collection Chair—OPEN**

**Reflections: Area 2 Collection Chair—OPEN**

**Reflections: Display Coordinator—OPEN**

If you like to have a good time with fun people these open spots were made for you. We are looking forward to a terrific year with increased local unit collaboration and communications along with informative parent education speakers and meaningful meetings. We want to hear from you, so send your suggestions, comments and complaints to [jennyathome19@msn.com](mailto:jennyathome19@msn.com).

**\*\*\*Notice \*\*\* The annual one time council fee has been increased from \$35 to \$50 per unit. This fee covers the following Local Unit Services provided by your council:**

Bulk Mail Permit, Principal's Recognition, Legislative Action, Reflections Reception, Awards Banquet, Founders' Day, Council Directory, Website & Communications and the newly added council wide Zoomerang survey service. Information for all these services can be found on the website at [www.everettptsacouncil.club.officelive.com](http://www.everettptsacouncil.club.officelive.com). Be sure to send us important dates for your PTA and we will put them on the council wide calendar. Wouldn't it be great to see if a neighboring school is selling cookie dough the same time you are? Or maybe you could avoid conflicting meeting dates with your feeder school.

The council has also enlarged the suggested donation for the Shoe Fund Program. With a 16% higher request rate from schools the need to provide is on the rise. Our district has benefited from your generous donations and we encourage you to continue your support of this important program.

Lastly, we want to strongly encourage all Everett Units to make a proud showing at the **Region 7 Fall Leadership Conference**, by wearing our team color, Orange. We will be handing out your leadership packets that will include great leadership training materials, lists of important dates from Council, Region and State, not to mention your membership cards! We will be giving out a door prize ticket to each of you that stops by the council table. **WEAR ORANGE** to the conference and receive an extra door prize ticket.



***Pam Osburn***  
***Council Co-President***  
**pam@duracoat.org**  
**360-652-2360**

## MARYSVILLE COUNCIL 7.4

**Marysville Council has been very busy this past year, and thanks to Everett Council for the idea, we have started a Community Shoe Fund! Between local units donating money and our booth at convention, we were able to give out over 30 pairs of shoes since we started this program and the requests keep coming in! We are very excited to begin this New Year! Our Council theme will be Together and Trained. We are looking forward to working together as a team and being trained to perform the work we agreed to do, in an efficient and effective way. We all need to work "together" and we all need to get the training to do our jobs and we should encourage others to do the same. Marysville PTA Council will be providing extra training this year and working together to make sure this year is the best that it can be! Your council board is here to help, we are excited to meet you all and look forward to our first meeting in August. Join us on Facebook and if we don't have your contact information yet, please send it to [marysvilleptacouncil@yahoo.com](mailto:marysvilleptacouncil@yahoo.com).**



***Theresa Ramey,  
Council President***  
**[info@marysvillepta.org](mailto:info@marysvillepta.org)**  
**Phone: 425-232-3107**



## MUKILTEO COUNCIL 7.5

**2010-2011 was a great year for the Mukilteo PTSA Council!**

As always, the Reflections Program and the District Spelling Bee were major highlights. Our District even sent a Reflections entry to the National Competition. The District Bee was another opportunity to see our students in action. From Kindergarten to Fifth Grade, these spellers were amazing! Also amazing were our volunteers! Every year we are fortunate to have the participation of our District community including Principals, Deans, Teachers, members of the administration and school board, parents AND all ages of student volunteers. A HUGE thank you to everyone who helped to make this a successful event.

In addition, we featured some fantastic guests at our General Meetings. Topics varied from the Giving Wishes Program and the Mukilteo Foundation to the Mukilteo Teacher's Union and District Budgeting. All of our guests were very informative and much appreciated. We wrapped up the year celebrating some of our most cherished volunteers at the annual PTA/PTSA Volunteer of the Year celebration. Hearty congratulations to Daphne Baird from Serene Lake; "Farmer John" from Olivia Park, Melinda Toom from Endeavour, Randi Seaberg from Columbia, Rick Dennison from Picnic Point, Lisa Ahumada from Discovery and Diana Besse from Horizon.

For the 2011-2012 school year, we will be welcoming Christine Steward and Johanna McManus to the Council Board. They will be joining Rick Simon, Jamie Groshong and Shelley Friend. Only one of our current board members will be moving on next year, thank you to Lori Koegler, our superb treasurer.

Next year we look forward to providing the same level of commitment to all of the above mentioned activities as well as a continued effort to engage all of our District's Elementary school PTA/PTSAs. We can all learn from each other.



***Shelley Friend  
Council President***  
**[shelleyfriend@ymail.com](mailto:shelleyfriend@ymail.com)**  
**425-743-9012**

# REGION 7 FALL CONFERENCE



**Tuesday, August 23, 2011**

**5:30—9:00pm**

**Eisenhower Middle School**

**10200 25th Ave SE Everett, WA 98208**

## Schedule

**5:30-6:15** Registration & Light Dinner

**6:15-6:40** Welcome & "Region Time"

**6:45-7:45** Class Session 1

Budget & Financial Review

WSPTA & PTA Programs

Membership Basics

For The Record

Treasurer Nuts & Bolts

Board Development Strategies

Standing Rules

**7:50-9:00** Class Session 2

Online Membership

Money Matters

Reflections

Nominating Committee

Grant Writing

Committee Chairs: Communicate,

Collaborate, Coordinate

President & The Team

**ONE FLAT FEE**  
pays for your  
Exec Committee,  
Board of Directors,  
Committee Chairs—**ANYONE**  
who is interested  
in learning more about PTA  
& working on their  
leadership skills!

**Registration is available**

**ONLINE ONLY**

You will need to go to the  
following link to register

<http://region7fall11.eventbrite.com>

**Conference Fee:**

**\$40.00 per local unit.**

NOTE: There is a \$25 Late fee for units  
registering after August 16th

**With Online Registration**  
you can pay by credit card  
or you have the option  
to bring a check  
to the Conference



\*Make checks payable to WSPTA  
and remember PTA checks  
must have 2 signatures.

Questions? Contact Virginia Muniz @ [ptareg7@wastatepta.org](mailto:ptareg7@wastatepta.org) or 360-403-9731