

**REGION 12
SERVICE
DELIVERY TEAM**

Region Director:
Connie Andrews

Legislation Chair:
Hope Houck

Membership Chair:
Louis Hunsaker

Newsletter Chair:
Colleen Schofield

Council Representa-
tives:
Michele Braccia
Colleen Schofield

Programs Specialist:
Mike Lowry

Service Specialists:
Lani Whitlock
Judy Morgan

**SERVICE
DELIVERY
TEAM IS HERE
TO:**

□ **Communicate:** Provide information on Region and State Events.

□ **Educate:** Provide Leadership Training for Local Units through Regional Conferences and on-site trainings.

□ **Support:** Help Local Unit Leadership with questions and situations that come up during the year.

Southeast Sage

VOLUME 13 ISSUE 1

SEPTEMBER 2011

Region Director Message

It's hard to believe that summer is over and the kids are back to school. Looks like it's time to get to work .

I hope you had an opportunity to meet with your new board and set some goals for your PTA.

I enjoyed getting to meet many of you at the region conferences. I look forward to seeing all of you at PTA in the Law on October 20th in Richland.

If you did not attend one of the region conferences and pick up the leadership packet for your PTA, let me know, I have one for you. The leadership packets contain very important information for your PTA.

If you have questions or want more training for your PTA board please let me know. I have an awesome Service Delivery Team and we would enjoy coming to your meetings or just sitting down with you and answering questions. We are here to help you with whatever you need to be successful. I wish you all great success this year.

Region 12 Director
Connie Andrews



INSIDE THIS ISSUE:

Membership	2
Nominating Committee	3
Reflections	4
Council Update Outreach	5
Legislation New Bylaw	6
PTA & the LAW Registration Form	7
Webguide	8

This is what PTA is all about!

PTA & the Law



**October 20, 2011
5:30–9:00 p.m.
RHS Library**

Do you know ...

1. How many raffles, bingo games, and amusement game events you can have before you need to get a gambling license?
2. If any of your officers have a conflict of interest? And how do you proceed on the decision, if they do?

3. How to determine if your activity is PTA or ASB?

4. When to designate a restricted fund or donation and which forms to use for a restricted donation?

5. Why your PTA needs to have insurance? And what types of coverage to chose?

6. When to file taxes and which form to file?

7. Which PTA activities are subject to sales tax?

All these questions and many more will be answered at your local Regional PTA and the Law seminar.

Please plan to attend so that you will make educated decisions concerning your responsibilities as an officer or member of a local unit.

Mark Your Calendars

Membership Message by Louise Hunsaker

M e m b e r s h i p



“A person has truly become a PTA member when their circle of concern stretches beyond their own to include all children. A parent is truly a PTA member when their decisions are decided by a deep and abiding sense of responsibility for other peoples’ children as well as their own.” Author unknown

Hi! My name is Louise Hunsaker and I am proud to serve this year as your Region Membership Chair. I currently have 1 Middle School child and 2 in High School so I know how crazy things can get! I want to help you become successful as you strive to increase your PTA's membership this year. Please feel free to contact me if there is anything I can do to help you achieve your goals. As we get this new school year under way, here are some things I hope you remember. PTAs are important to everyone in a child's life ~ from someone who wants to be an active volunteer to the person who just wants to join and be recognized as a supporter.

The slogan continues for this year of “Every Member Matters” with a focus on increasing, retaining and diversifying our membership.

Membership matters to ALL ~ not just the Chair

Ask yourself the following questions....

- Did you send your forms home in the school registration packet?
- Did your school give you a prime place at “back to school days” or are you stuck in the corner away from the action?

• **Are you represented at school events and do you offer the option to find out about and join PTA in your school?**

• **Do you have a welcome pack for new families.?** If you answered “Yes” to all or some of these questions you have a great start to your membership campaign!

Your PTA Membership drive is just the beginning of a Successful year! Plan on keeping members involved and informed throughout the year!

Joining PTA creates a partnership between parents and educators who strive to enhance student learning and enrich the lives of the students within the school. The number one reason is to benefit their child, but having a membership also supports the efforts for all children served by your local unit, the State PTA and the National PTA. Every member needs to see the benefits of their membership and understand the goals of your PTA.

Here are a few reasons to join PTA:

Get Connected and **Communicate** with your members. Share what is going on through meetings, newsletters, and websites. Publicize and celebrate!

Inform all members about opportunities at the Council, State and National levels, as they may be interested in learning more. PTA is a forum for members to obtain knowledge and voice their opinions as well as being able to participate by volunteering.

Watch your members grow. By volunteering you gain valuable experiences and personal confidence. When volunteering you will put your personal skills and hobbies to good use and for a great cause. Happy volunteers recruit more volunteers.

Taking an active role. Parent involvement has been proven as a predictor of student success. By being involved you can be part of the solutions to making positive changes. As a role model you will demonstrate to your child the importance you place on education. PTA is the avenue for the exchange of ideas and members should be encouraged to use their voice to make a difference in the lives of the children.

INCREASED DUES FOR 2011-12:

NPTA: \$2.25

WSPTA: \$5.75

If your unit is in a council, please check with your council president to find out what your council fees are.

Region 12 Nominating Committee

“Together We Can...”

RECOMMENDATIONS FOR STATE PTA REGION DIRECTOR

Local PTA Unit and Council Leaders in Region 12:

This is your opportunity to recommend an individual who possesses the leadership qualities and desires to fill the position of Washington State PTA Region Director. This requires an enthusiastic, capable, and committed person who resides within the region to be represented; is a member of a local PTA/PTSA unit; has served as a local unit or council officer for two (2) years or served on the region service delivery team for two (2) years or served on the region service delivery team for one (1) year and as a local unit or council officer for one (1) year or has served on the WSPTA Board of Directors for at least one (1) year and. [WSPTA Uniform Bylaws, Article 7, Region, Section 2, Region Director Election, (b)]Region Directors shall not be eligible for two (2) consecutive terms in the same office.

The Region Director is elected for a 2-year term from June 1, 2012 to May 31, 2014.

Send recommendations to:

Louise Hunsaker
2403 Camden St.

Nominating Committee Chair
Richland, WA 99352

RECOMMENDATIONS FOR STATE PTA REGION 12 DIRECTOR

Name: _____

Address: _____

Phone: _____ email address _____

QUALIFICATIONS:

Local Unit Officer:

Name of PTA _____ Position _____ Year _____

Name of PTA _____ Position _____ Year _____

Council Officer:

Name of Council _____ Position _____

Year _____

Name of Council _____ Position _____

Year _____

Service Delivery Team:

Year _____ Name of Region Director _____

Year _____ Name of Region Director _____

WSPTA Board of Directors:

Year _____ Position _____

Year _____ Position _____

PTA SERVICE / INVOLVEMENT _____ COMMUNITY SERVICE / OTHER _____

PERSONAL QUALITIES / OTHER _____

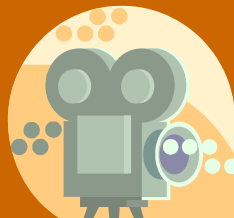
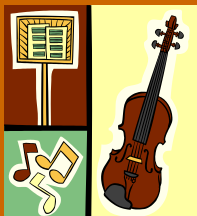
Nominee’s Consent:

I meet the requirements as specified in the Uniform Bylaws of Washington State PTA for the position of Region 12 Director; I understand the duties of the position; and, I am willing to accept the responsibilities of the position, if elected.

Nominee’s Name _____

Nominee’s Signature _____

Date: _____



Reflections Mike Lowry Region 12 Programs Director

Hi, I am the newly appointed Region 12 Programs Coordinator. My task is to give local units and councils in our region a boost with the Programs listed on the wastatepta.org web site. I can be contacted at mikelowery01@gmail.com.

The leadership packages for Reflections were not included in the President's packages. You will find them on the Wastatepta.org web page under the leadership section. Because of changes made in late summer the mailing was delayed. However, they are on their way to Presidents now.

You can start your advertising now. Use the posters on the reflections web pages. You can customize them by typing in the deadline date and your contact number before you post in the school. You should also have a central area where students can pick up entry packets. In the packets you will want to fill out the bottom section of the entry form before you copy it. (This will avoid your filling them out by hand later) Get the info requested from your president. Please be sure to have rules available for each category also.

Good luck,
Mike Lowry

Planning Your Program

LOCAL UNITS

- Appoint a Reflections chair and a committee two or more people. Subscribe Committee chair to Reflections listserv by contacting WSPTA office.
- The committee should hold meetings to:
 1. Promote the Reflections Program.
 2. Set deadline dates, keeping in mind the council deadline, or the state PTA deadline, if a non-council unit.
 3. Select judges and judging criteria.
 4. Establish awards for winners and arrange a display of entries.
- Determine the amount of funds budgeted for Reflections – if no funds are budgeted, send estimated expenses to treasurer for board approval.
- Prepare information for students, teachers, and parents.
- You may duplicate the Official Rules for use as your local unit, adding your deadline date to the list (pages 7-18 of this guide).
- Your responsibility as a Reflections chair is to present this material to the students and parents of your local unit and make sure students have every opportunity to excel by sending accurately prepared entries.

2011-2012 Reflections Program Theme:

"Diversity Means..."

Richland Council Update

www.richlandcouncilpta.weebly.com

The Richland PTA Council is composed of representatives from all active local units. At these meetings, local unit members will have direct access to a Richland School District representative and get valuable district information. You can share information with other local unit representatives, such as what works and doesn't

work with fundraising / membership. A Richland PTA Council meeting is a great place to ask questions if you need advice for your PTA. The Richland PTA Council meets once a month; see the Council web site for up-to-date information on meetings, training and registration, officer contacts, and more.

*Meeting
Sept. 26,
2011
7:00pm
at the
RHS
Library.*

The Richland PTA Council is seeking a Scholarship Chairperson. This is a fun and rewarding job. There is written guidance available, with opportunity to add an individualistic touch. If you've ever pictured yourself in this position, please contact Richland PTA Council President, Diane Call, at 531-4095 or buff-call1@frontier.com.

Outreach Committee

What exactly is "Outreach"? Outreach is defined as reaching out; to reach beyond; to extend services or benefits to a wider section of the population.

From this standpoint PTA does a lot to extend services to its members, but is that what we really mean by outreach? I think PTA's definition is broader and more inclusive than a traditional dictionary definition.

Jimmy Carter said "We have become not a melting pot but a beautiful mosaic. Different people, different beliefs, different yearnings, different hopes, different dreams."

Our schools - to a greater or lesser extent - reflect this

mosaic. Do we notice the unique mosaic of our school? What characterizes a school's mosaic? How many different cultures contribute to the diversity of our children's school? How comfortable is the school with its unique mosaic? How do we make connections with people from cultures different than our own? How do we build bridges with parents in our schools who may not be as actively engaged as our

PTA members? How do we learn from them? How do we include them and make them welcome in our activities? These questions are the ones which top the list of the Outreach Committee.

Most parents want a good education for their children. Strong PTAs are one measure of how well a school is doing and by inference the mosaic of students who make up that school. Understanding the unique peoples and cultures of our schools will make us stronger.

Region 12 is Currently looking for an Outreach Chairperson. If you have an interest or know someone who would be good at this position, contact Connie Andrews PTAreg12@was-tatepta.org





Legislative Assembly

October 14-15, 2011

SeaTac Marriott Hotel

Please take a
few minutes
to complete
the online
Survey

Legislation

WSPTA Legislative Assembly

What it is and why kids need your PTA to send a delegate to it!

One-hundred years ago PTA was founded as a child advocacy organization and advocacy is still an important part of our mission. We all joined PTA to make a difference for kids and participating in Legislative Assembly is an essential part of making that difference. Because there are so many issues impacting children and PTA's resources are limited, it is essential that we identify which are the most critical.

This annual process begins each spring when PTA members submit issues important to them and their community. It carries forward at Legislative Assembly where attendees learn more about proposed issues and let their voice be heard to determine PTA's Legislative Priorities. It culminates with advocacy we do with the issues during the legislative session.

Current proposed issues have been compiled into a survey and members are encouraged to complete surveys to determine the priorities of their

submitted by Hope Houck

PTA. Then ensure that the "voice" of your PTA is heard by sending a delegate to Legislative Assembly, to be held Oct. 14-15 in SeaTac. The Proposed Issues Survey and survey guidelines are available by going to www.wastatepta.org and clicking on "Legislation".

A Legislative Assembly Flyer, Registration Form, as well as additional information on proposed issues are also available. For more information contact Hope Houck, Region 12 Legislative Chair at 509-943-3729 or hhouck@charter.net.

NEW BYLAWS IN PRACTICE

Included in the Leadership Packet are the new WSPTA Bylaws including all the changes that were adopted at the WSPTA Convention in April/May 2011. Here are some highlights of the ones most likely to affect your local unit:

Article 5 (Local Unit) or Article 6 (Council), Section 2 (a)(5): "During the PTA year, at least one member of the executive committee attend PTA & the Law, and all elected executive committee members attend at least one training which could include, but not be limited to, WSPTA Spring or Fall Region Conference, PTA & the Law, WSPTA Convention, WSPTA Leadership Conference, or WSPTA Legislative Assembly, WSPTA Emerging Leaders Conference, or onsite training provided by a region service delivery team member. Convention training counts towards the next year's executive committee members' training for the next year's requirements." [Editorial Note: This means that training received at the WSPTA Convention shall be counted toward the training requirement for the PTA year following the Convention.]

WSPTA Region 12 PTA & the LAW



It's that time again...time for **PTA & the Law**. Region 12 will be hosting **PTA & the Law** trainings on October 20th.

Cost is \$40 per local unit if paid by October 15th and includes 2 handbooks.

The cost is \$65 at the door. You can bring as many members of your PTA as you like. Bring your principal too! We look forward to seeing you there!

**Thursday, October 20th 2011
Richland High School Library
Time 6:00-9:00pm**

Registration will begin at 5:30

PTA and the Law presentation will begin promptly at 6:00 pm.

Local Unit Name _____

LU contact _____

Contact Phone _____ Email _____

Names of those attending

_____	_____
_____	_____
_____	_____

Please mail this form with your \$40.00 registration fee to Connie Andrews, 1723 Birch Ave, Richland WA 99354 by October 15^h. If you have any questions call me at 509-943-3133 or you can reach me by e-mail at PTAreg12@wastatepta.org

Don't forget to make a copy of this form for your records and please remember to put your local unit ID number on your check. Make Checks out to Washington State PTA.

Applegate Grant

The Applegate Grant program provides opportunities for supplemental funding to units and councils for community-wide projects



This is a great opportunity for funding of events. Encourage your local units, chair people, librarians, and teachers to apply.

For all the details and forms check on wastatepta.org

The purpose of the Applegate Grant Program is to provide opportunities for supplemental funding to units and councils for community-wide projects focusing on the health, welfare, safety, education, care and protection of children. Each year, the Washington State PTA sets aside funds to be awarded to local units and councils for these programs, projects and activities.

See a list of last years winners on the state website.

Find this website link and many more on wastatepta.org/resources/kids under parent resources.

The Child & Family WebGuide

<http://www.cfw.tufts.edu/>

Due to the expanding volume of information on the Web, parents and professionals often have difficulty locating the information they want. Even when they find information that seems relevant, they have difficulty determining if it is credible. The Child & Family WebGuide describes trustworthy websites on topics of interest to parents and professionals. All the sites listed on the WebGuide have been systematically evaluated by graduate students and faculty in child development.

These sites have been selected from thousands that are available on the Web, based primarily on the quality of the information they provide. The goal of the WebGuide is to give the public easy access to the best child development information on the Web.

There are five main categories of information: family/parenting, education/learning, typical child development, health/mental health, and resources/recreation.

Created in April 2001, by faculty at the Eliot-Pearson Department of Child Development at Tufts University and librarians at Tisch Library, also at Tufts. The Eliot-Pearson Department has a 75-year history of studying, teaching and fostering the well being of children.